

INTEGRATION



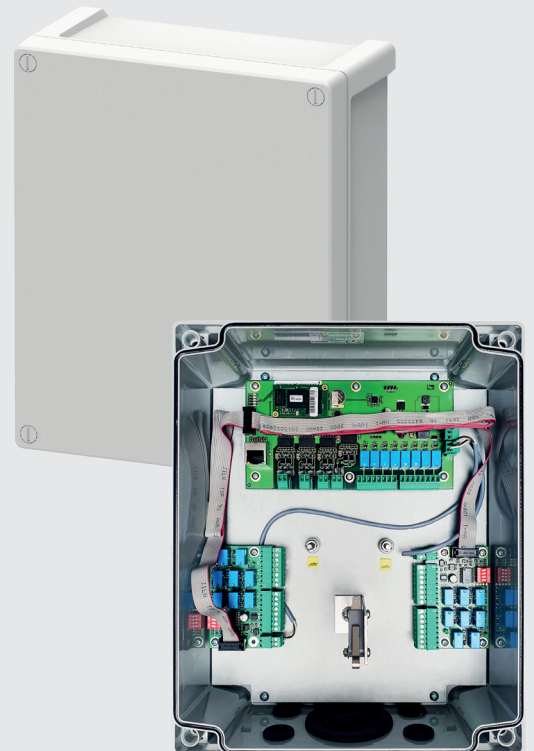
MAXIBUS UNIVERSAL

ALARM INFORMATION HUB



PERFORMANCE FEATURES

- **Centralisation** of all alarm information to a single point, via networking: SORHEA products and third-party products
- **Remote configuration and maintenance** of detectors (infrared barriers, detection cable, etc.)
- **Secure data transmission**
- **Integration with VMS, supervisors, hypervisors**



INTEGRATION

CENTRALISATION

All SORHEA solutions are compatible with the MAXIBUS

- Centralisation of all alarm information in a single point
- Four independent communication ports (each port is compatible with all SORHEA products)

NATIVE CONNECTION

- MAXIRIS
- SOLARIS
- APIRIS
- G-FENCE 2400
- G-FENCE 3000
- PIRAMID

MI8 CONNECTION

- COLIRIS
- BIRIS
- MINIRIS
- G-FENCE 600/600Z
- THIRD-PARTY MULTI-SYSTEMS

8-INPUT MI8 MODULE



CENTRALISATION OF ALARMS

MAXIBUS UNIVERSEL

VMS INTEGRATION
SMART BRIDGE



ALARM EXPLOITATION

SO-MAP
AND OTHER
SOFTWARE/VMS

CONFIGURATION

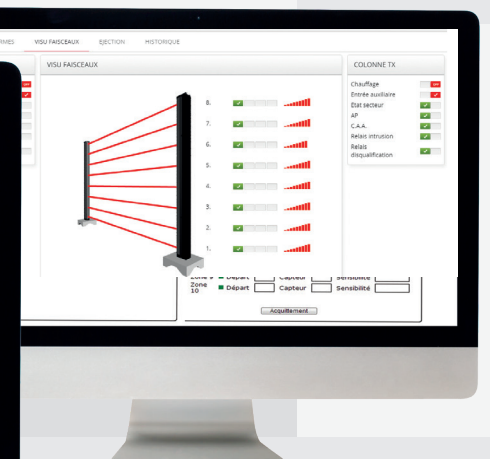
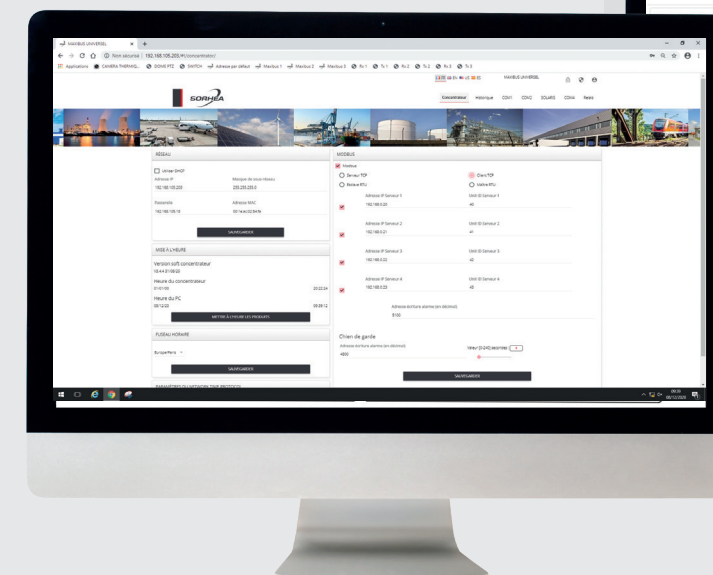
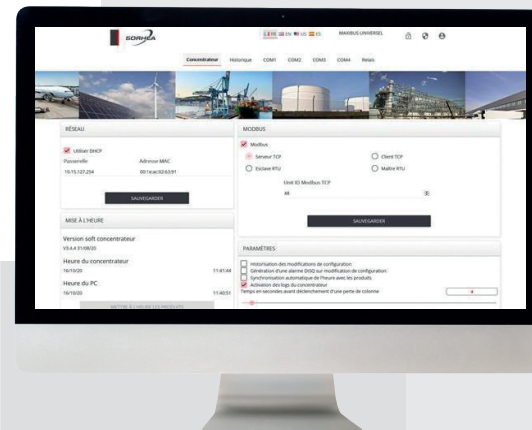
- Embedded web server
- Remote configuration and maintenance of detectors
- Real-time system status
- Time and history log with option to extract data
- Automatic configuration update:
 - DHCP compatible (automatic IP address recovery)
 - NTP compatible (automatic time update)

CENTRALISATION

CONFIGURATION

SECURE
TRANSMISSION

OPERATION



SECURE DATA TRANSMISSION

- Communication on secure networks protected against external attacks:
 - Communication possible with the 802.1x networks
 - Capacity to use authentication certificates
- Encrypted communication on IP network:
 - HTTPS configuration and operation possible
- Secure Modbus network communication
 - Modbus tunnelling by TLS

OPERATION

- Integration with VMS, supervisors, hypervisors:
 - API
 - MODBUS TCP / MODBUS RTU

TECHNICAL CHARACTERISTICS

	MAXIBUS UNIVERSEL
Power	12 V DC
Number of communication ports	2 or 4
Alarm outputs	8 to 136 on/off contacts, Modbus TCP, Modbus RTU, API
Box dimensions (mm)	253mm x 313mm x 115mm
Operating temperature	0 °C to +55 °C

	OPTIONAL EXTRAS
Extension card	Up to 16 additional 8-relay extension cards
MI8: 8-output remote module	Wired or radio system that connects intrusion detectors to the MAXIBUS
Smart Device ⁽¹⁾	Software interface between the MAXIBUS and VMS, supervisors, hypervisors
Electromagnetic compatibility	Compliant with European standards (CE label)

1. One driver per MAXIBUS Universel whatever the number of communication ports used, one driver per VMS server