

INTEGRATION



MI8- 8 INPUT REMOTE MODULE

WIRED OR RADIO CONNECTION SYSTEM FOR
INTRUSION DETECTORS



PERFORMANCE FEATURES

- **Configuration via PC or smartphone**
- **Communication Modes**
wired bus cable or secure radio network depending on the site
- **Low Power Option**
(solar-powered version available)
- **Adaptability to all types of configurations**



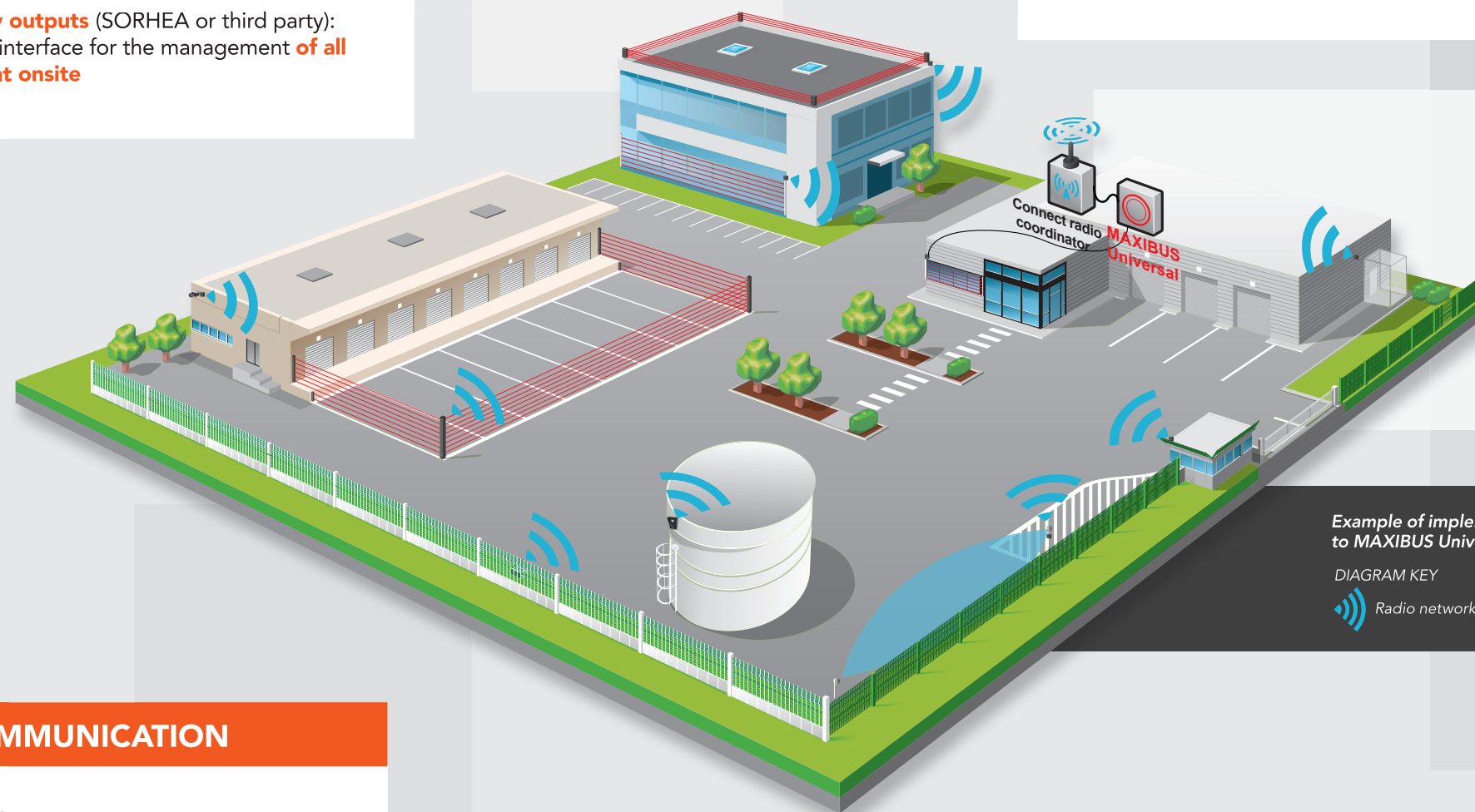
CENTRALISATION OF ALARM INFORMATION

The MI8 module can communicate the alarm information from all detectors on a site to the MAXIBUS Universel hub.

- **Easy** to implement
- **Multiple** connection possibilities:
 - Dynamic mesh radio network
 - RS485 bus cable
- Compatible with **all types of dry relay outputs** (SORHEA or third party): MAXIBUS Universel becomes the sole interface for the management **of all perimeter intrusion detectors present onsite**

QUICK AND EASY IMPLEMENTATION

- **Personalised** alarm input **names**
- **Simplified configuration and maintenance:** smartphone application available
 - configuration of alarm inputs
 - local history reading per input: 200 event log for every detector



Example of implementation of products linked to MAXIBUS Universel via the MI8

DIAGRAM KEY
 Radio network

SECURE MESH RADIO COMMUNICATION

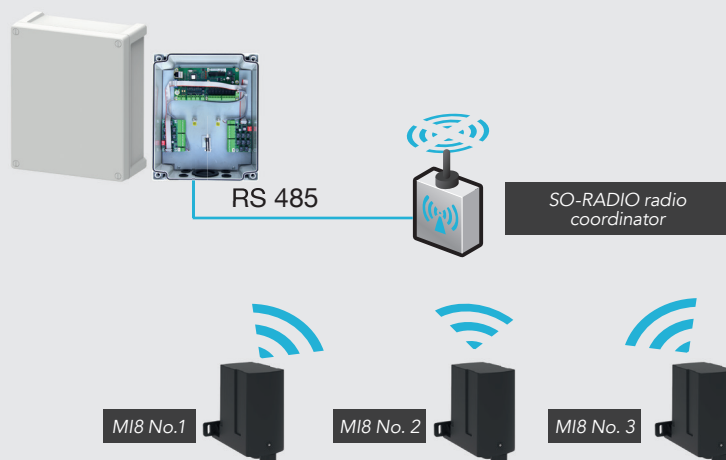
- **Private LoRa® radio communication**
- **Encrypted radio network:** data security
- **Mesh radio network** for a guaranteed robust installation
- **Site integrity and security:** permanent monitoring of the presence of MI8 modules on the network (guard dog function)
- **Radio range:** 300 m line of sight

LOW POWER MODULE



- **Solar powered version available**
- **Isolated contact recovery** (gate contacts, etc.)

MI8 MODULE OPERATION SUMMARY

MAXIBUS universal



TECHNICAL CHARACTERISTICS

	8-INPUT REMOTE MODULE
Alarm information	8-input on/off + Tamper
Alarm transmission	Either by dynamic mesh radio network to radio coordinator Or by wired network RS 485
Radio frequency	Frequency band 868 MHz, 19 selectable channels, LoRa modulation
Data encryption	AES 128 bits
Power	Range 4 V DC – 26 V DC (consumption 10 mw at 4 V DC)
Operating temperature	-40 °C to +70 °C
Electromagnetic compatibility	Compliant with European standards (CE label)
Local wireless configuration via smartphone applications	Applications available for all smartphones: <div>   </div>

	SO-RADIO COORDINATOR
Alarm transmission	RS485 to MAXIBUS Universal
Power	12 V DC (40 mA)
Operating temperature	-40 °C to +70 °C
Electromagnetic compatibility	Compliant with European standards (CE label)