

LINES OF BUSINESS

# WASTE COLLECTION SITES

**SORHEA**



# LEADER IN PERIMETER PROTECTION AT YOUR SERVICE

The earlier you detect, the more you reduce the risk of intrusion and potential malicious acts or thefts on a site.

Perimeter intrusion detection on your premises allows for :

- **Advance warning of an intrusion,**
- **Early verification upon receiving an alarm notification,**
- **Early response triggered through the centralised alarm information system.**

Perimeter intrusion detection is our business. We have developed a wide range of technologies that includes wireless and solar powered systems, offering the most innovative solutions for protecting your critical infrastructure sites.



## TECHNOLOGICAL ANSWERS TO MEET EVERY NEED

- **Approach detection** by thermal detectors & video analytics associated with dual technology sensors.
- **Intrusion detection by active infrared**
- **Intrusion detection and deterrence by physical barriers** : fence-mounted shock detection cables and electrified detection fencing.



## COMMITMENTS THAT MAKE THE DIFFERENCE

- **Guaranteed quality** : over 30 years of experience in supplying our customers.

ISO 9001

BUREAU VERITAS  
Certification



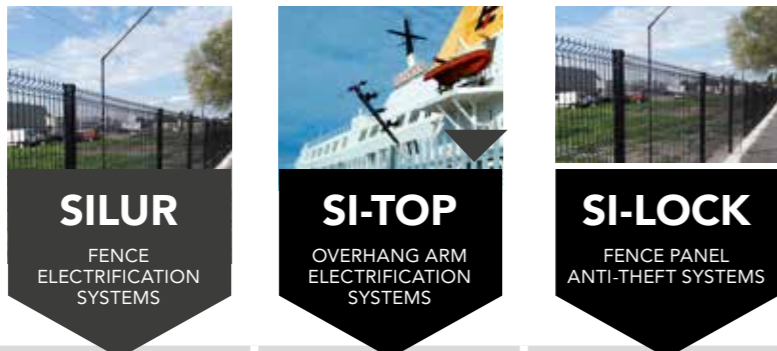
- **A customised service** to support you at every stage of your project.
- **On-site technical support** for engineering, pre-sales support and site commissioning.
- **A network of trained installers and integrators worldwide.**



# ALL OF YOUR NEEDS ADRESSED, FROM APPROACH DETECTION TO INTEGRATION INTO YOUR ON-SITE SYSTEM

Particularly sensitive on several levels. For a start, waste collection sites allow public access to areas where hazardous waste is collected. Most sites are new, but some older, often hastily constructed facilities, can be dangerous to users. What's more, thefts and break-ins are common. As a result, waste collection and recycling site managers are required to comply with certain standards in terms of fencing and intrusion detection and prevention relating to vehicle and pedestrian flows, at all times of day and night.

## OUR TECHNOLOGICAL SOLUTIONS



YOUR SPECIFIC NEEDS

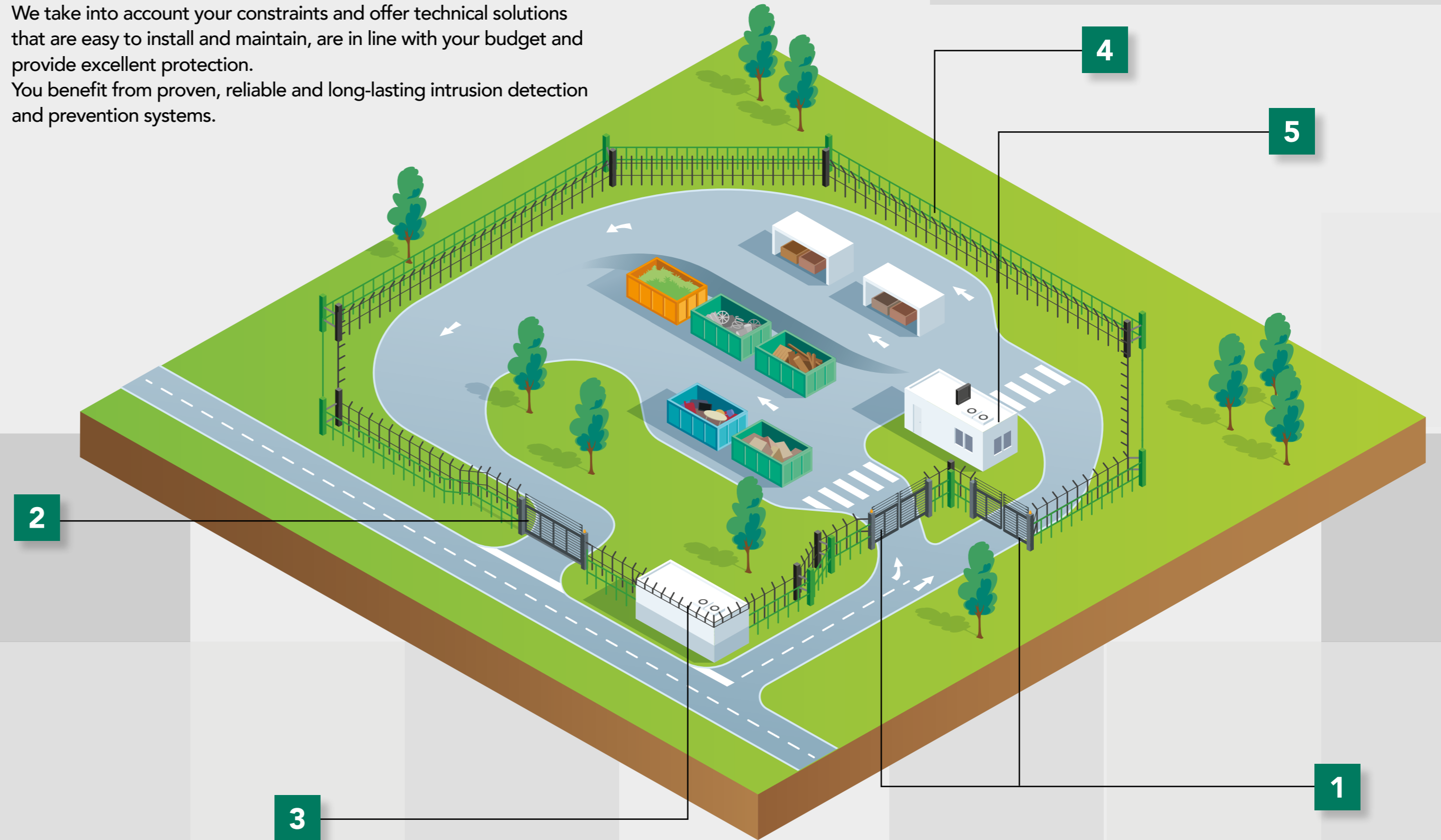
YOUR SPECIFIC NEEDS	SILUR FENCE ELECTRIFICATION SYSTEMS	SI-TOP OVERHANG ARM ELECTRIFICATION SYSTEMS	SI-LOCK FENCE PANEL ANTI-THEFT SYSTEMS
Suitable for various fence types	•	•	•
Provides continuous detection and deterrence at entrance points	•	•	•
Limits civil works	•	•	•
Deters, delays and detects all intrusion attempts	•	•	•
Prevents fence panel theft			•
Provides non-stop detection <ul style="list-style-type: none"> <li>• Detects intrusion and fence cutting, during public opening hours</li> <li>• High voltage prevents intrusion during closing hours</li> </ul>	•	•	•
Communicates alarm information	•	•	•

# OUR SECURITY SOLUTIONS FOR WASTE COLLECTION SITES

**Our expertise: offering solutions that meet the security requirements of your site.**

We take into account your constraints and offer technical solutions that are easy to install and maintain, are in line with your budget and provide excellent protection. You benefit from proven, reliable and long-lasting intrusion detection and prevention systems.




- 1 ELECTRIFIED DOUBLE GATES WITH EXTENSIONS
- 2 ELECTRIFIED SLIDING GATES WITH EXTENSIONS
- 3 WALL-MOUNTED ELECTRIFIED EXTENSION ARMS
- 4 ELECTRIFICATION OF THE EXISTING FENCE: SILUR FX OR 360
- 5 ALARM AND ELECTRIFICATION FUNCTION MANAGEMENT CENTRE





A MEMBER  
OF THE VITAPROTECH  
GROUP

1, rue du Dauphiné  
CS 90323  
69517 Vaulx-en-Velin Cedex  
FRANCE

 +33 (0)4 78 03 06 10  
 +33 (0)4 78 68 24 61  
 commercial@sorhea.fr

[www.sorhea.com](http://www.sorhea.com)

