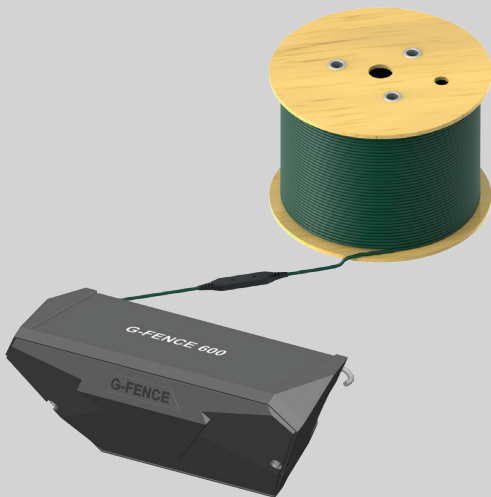




Logistics center

G-FENCE 600Z



A logistics center called on SORHEA to set up a perimeter detection system to protect its external transit area. This company wants a reliable solution, which detects upon intrusion on the site and which does not interfere with the movement of trucks on the site.



CONSTRAINTS TO CONSIDER

Transit areas are often crossed by trucks carrying goods. This site therefore needed a solution that greatly limits civil engineering work with a small footprint so as not to obstruct the movement of trucks. The proposed system is directly installed on the existing fences of the site and will allow an alarm to be raised on a Milestone supervisor as well as a resolution of doubts by video.

Key figures

3
G-FENCE 600Z

1500 m
secure perimeter

2
field technicians
for installation

OUR SOLUTION

To meet these needs and after studying the site, our pre-sales service offered to provide perimeter protection using a system for detecting shocks on the fence.

- Shock detection cables: G-FENCE 600Z

is made up of detection cables connected to a management unit. It detects vibrations caused by an intrusion by climbing, cutting or tearing off the fence. For this type of site, the management units are deported in external electrical bays for internal network connection to the site. The installation of this solution does not require any civil engineering work.