



## VIDEO ANALYSIS



# ONETRACK

VIDEO ANALYSIS INTRUSION DETECTION  
SOLUTION



## PERFORMANCE FEATURES

- **Intelligent analysis:**  
classification of objects detected
- Advanced tracking: **MultiTrack  
technology**
- **Simplified configuration**
- **Complete solution** with setup  
tool
- **MAXIBUS Universel and  
VMS compatible**



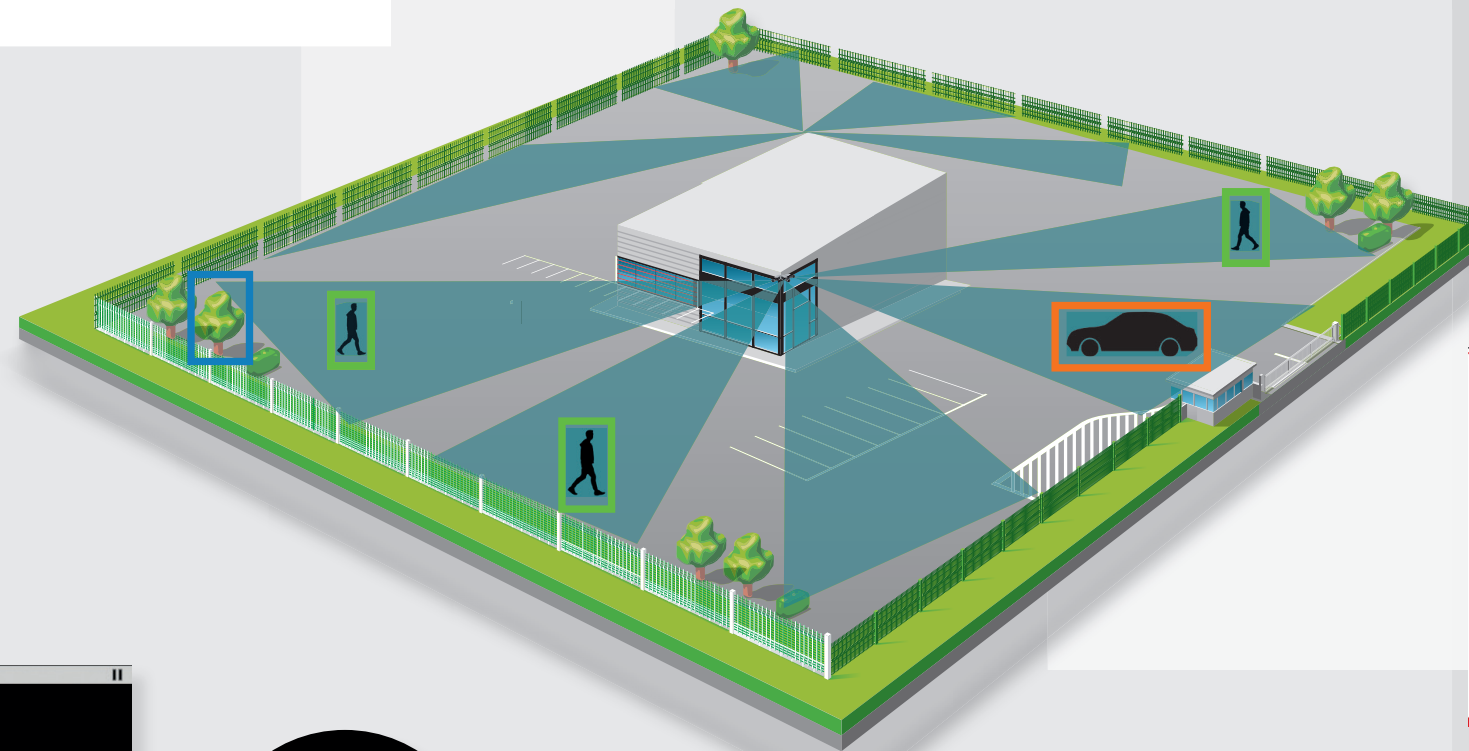
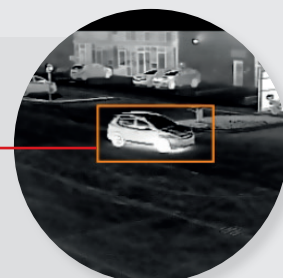
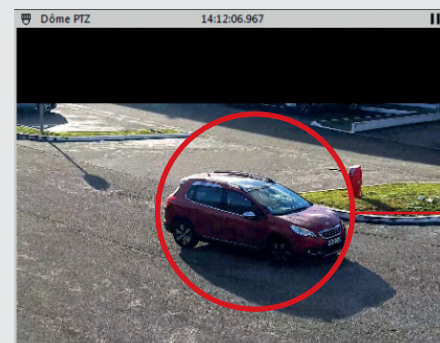
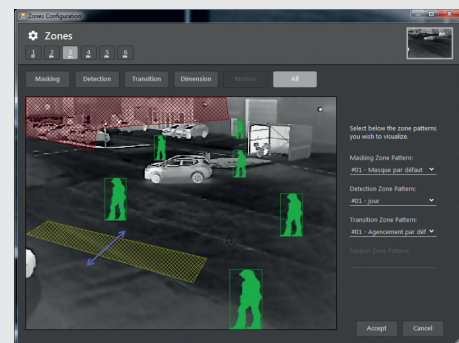


## INTELLIGENT ANALYSIS

- **Analysis of moving objects:** based on their features: shape, size, density, speed of movement, etc. (more than 50 criteria)
- **Classification of objects analysed:** «person», «vehicle», or «other»
- **Management of instable zones:** powerful algorithms for the elimination of triggers caused by vegetation, shadows, small animals, flags.

## MULTITRACK TECHNOLOGY

- **Control of PTZ domes by fixed cameras** (maximum of 7 cameras per dome)
- **Target tracking prioritising** based on type of object and zone
- **Simultaneous tracking of several targets**

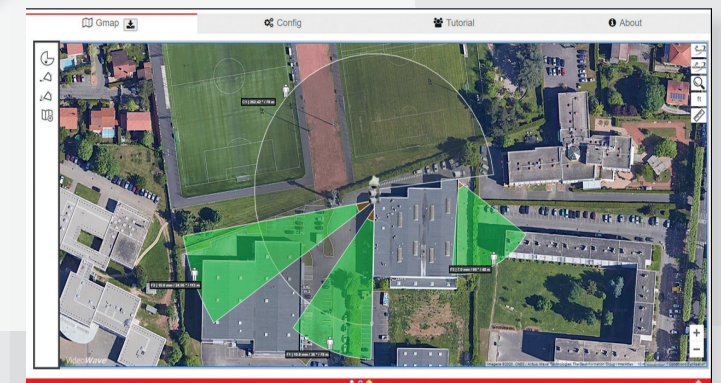


## COMPLETE ONETRACK SOLUTION

- Server-based **embedded solution**
- **Remote access** via client software
- Multi-screen **display system**
- **Online setup tool:** GMAP Tool



GMAP tool



## SIMPLIFIED CONFIGURATION

- **Creation of zones:**
  - detection zones
  - intrusion zones (one-way and / or two-way)
  - masked zones
- **Creation of presets:**
  - configurable dome patrols in continuous or random mode
  - associates preset positions to detection zones



Available on the  
App Store

GET IT ON  
Google Play

## MAXIBUS UNIVERSAL AND VMS COMPATIBLE

- **MAXIBUS Universal Compatible:** can be integrated with all SORHEA solutions
- **ONETRACK server is compatible with the following VMS :**

- GENETEC  
- MILESTONE  
- EXACQ

- TIL TECHNOLOGIES  
- AVIGILON  
- QOGNIFY



## ONETRACK SOLUTION OPERATING SUMMARY



## TECHNICAL CHARACTERISTICS

	ONETRACK SERVER		
	LITE	PRO	ENT
No. of cameras with video analysis	4	8	16
No. of cameras without video analysis	8	16	32
Operating system	Windows 10 64 bits		
Inputs / Outputs	Several modules available: from 4 inputs / 4 outputs to 12 inputs / 6 outputs		
IP Resolutions	CIF / 2CIF / D1 / 1.3MP / 2MP / 3MP / 5MP / 8MP		
Protocols	ONVIF, RTSP, VAPIX, IPELA, SMTP		