



## INTEGRATION



# SO-MAP

ALARM EXPLOITATION SOFTWARE



## PERFORMANCE FEATURES

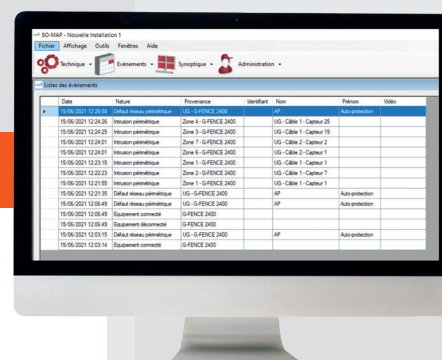
- Simple and intuitive software
- Advanced features
- Simplified and effective exploitation
- Alarm verification simplified



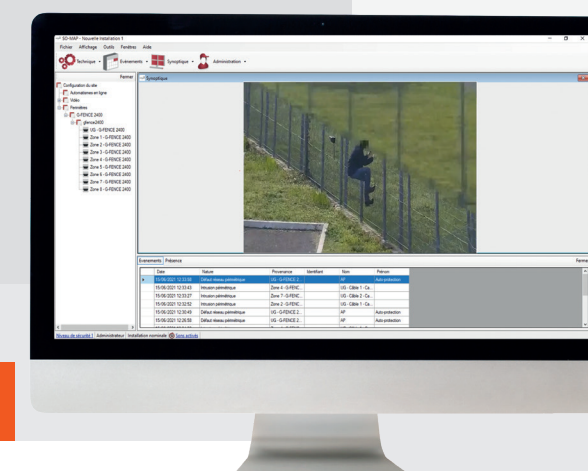
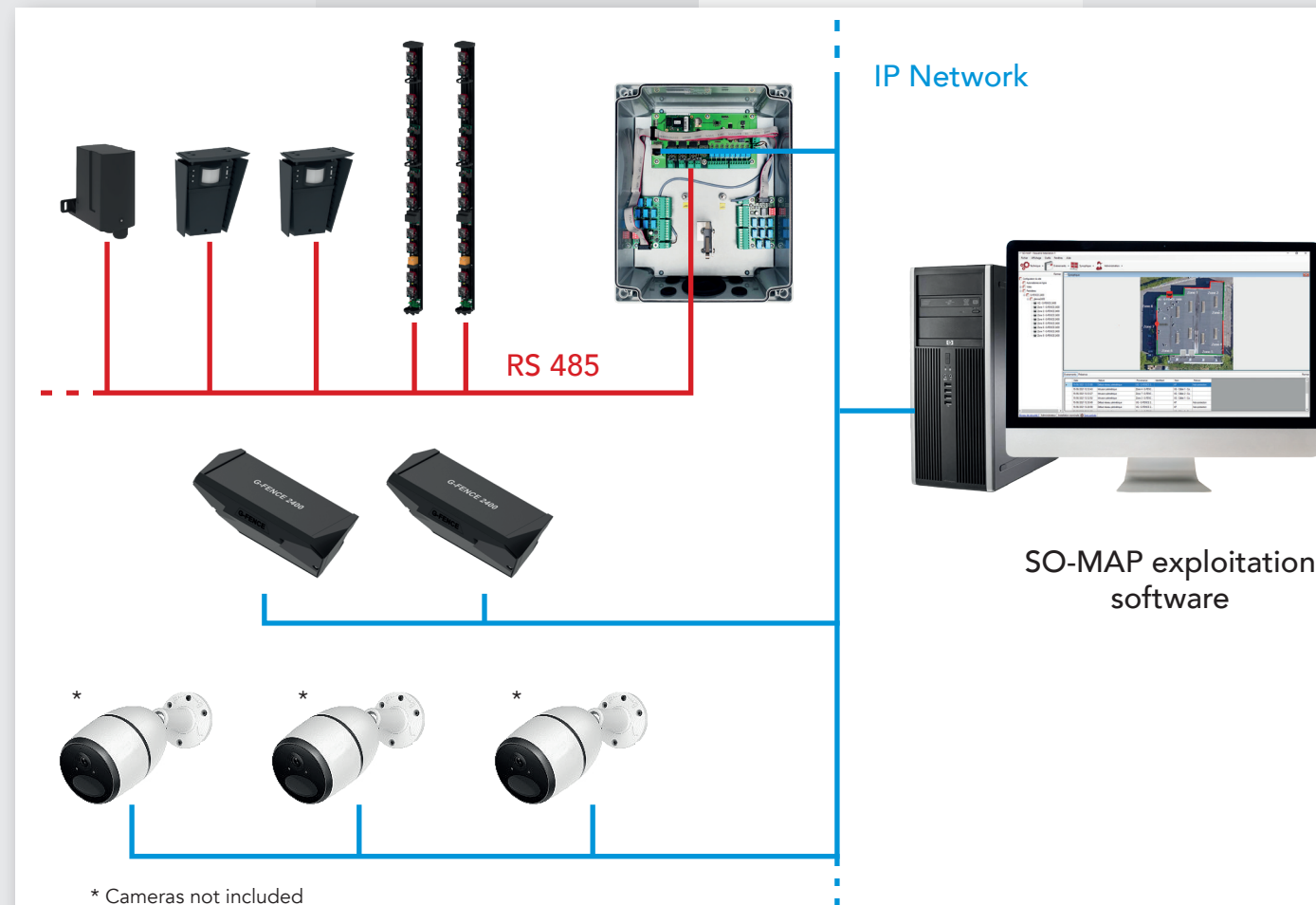
- **Streamlined site configuration:** automatic detection of equipment connected with SO-MAP
- **Easy positioning of products on the interface** with the «drag and drop» function
- **Intuitive creation of detection zones on the siteplan**



- **Multi-site management** with alarm prioritisation
- **Addition of automated functions** (sending emails, sms, etc.)
- **Creation of a log for recording events** (maintenance reports, etc.)



- **Quick and accurate alarm reports** as they happen, in « the feed »
- **Exhaustive list of all site information available** in the history log
- Filter application: **optimisation of event searches**



- Possible visualisation of live and/or video footage
- Groups of cameras assigned to detection zones
- Available video footage for a simplified alarm recognition

## NATIVE CONNECTION

MAXIRIS  
SOLARIS NG  
APIRIS  
G-FENCE 2400  
G-FENCE 3000  
PIRAMID

## MI8 CONNECTION

COLIRIS  
BIRIS  
MINIRIS  
G-FENCE 600  
THIRD-PARTY MULTI-SYSTEMS

8-INPUT  
MI8  
MODULE



**MAXIBUS  
UNIVERSAL**  
CENTRALISATION  
OF ALARMS



ALARM EXPLOITATION

**SO-MAP**  
MONITORING  
SOFTWARE

CENTRALISATION

CONFIGURATION

SECURE  
TRANSMISSION

EXPLOITATION

## TECHNICAL CHARACTERISTICS

	SO-MAP			
Operating system	Windows 10 and higher			
Available licenses	SO-MAP software + license for 1 MAXIBUS	Expansion module for adding 5 MAXIBUS	SO-MAP software + license for 5 G-FENCE 2400 Control Units	Expansion module for adding 5 G-FENCE 2400 Control Units
Required MAXIBUS Universal version	3.5.5 and higher			
Integrated products via MAXIBUS Universal	All MAXIBUS Universal compatible products			
Products integrated directly in SO-MAP	G-FENCE 2400, G-FENCE 600 and G-FENCE 600Z			
Number max. of MAXIBUS Universal and/or G-FENCE 2400UG	30			